

Instructions to load Witzenmann Delivery Package

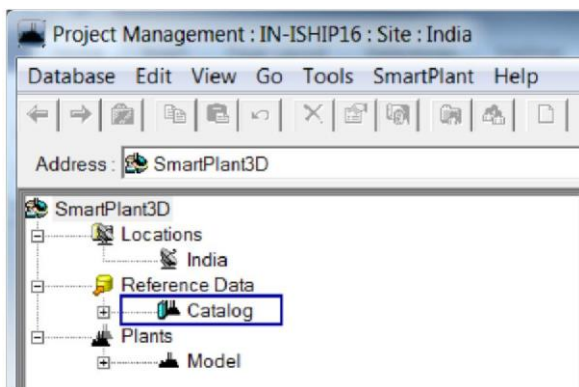
1. Introduction

- For best results you have to install the latest Hot Fix. Contact Intergraph Support for more information on Hot Fixes or visit the Intergraph eCustomer site.
- DLL's to be delivered in Symbol share Server S3D machine that will be placing these Parts.
- The XLS files can be placed in any folder; the ones used below are the S3D defaults.

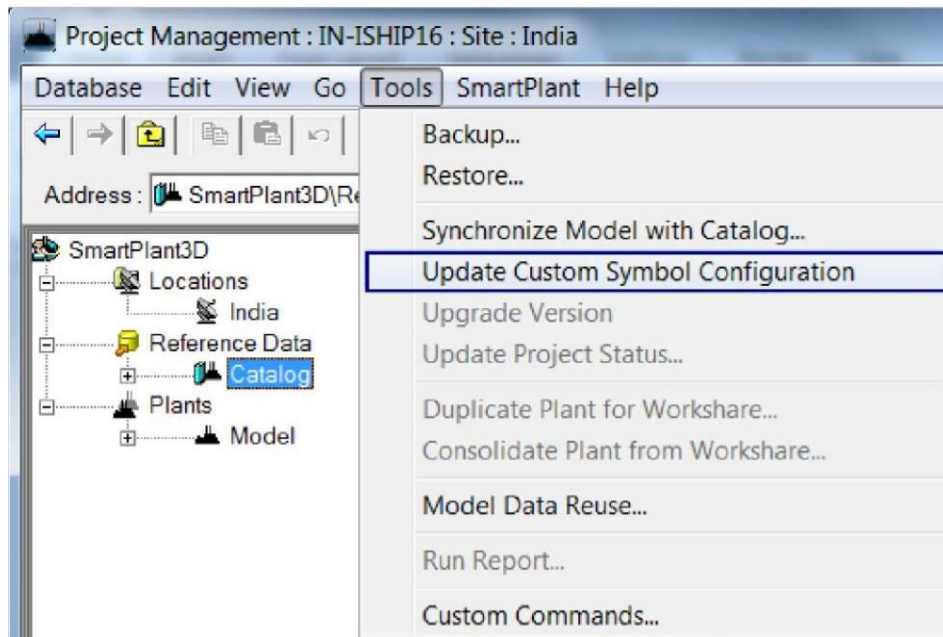
Step 1: Copy the DLLs

- Copy the following dll from the "DLLs" folder to
 "<Installed Directory>\SharedContent\CustomSymbols" folder.
 - Witzenmann.dll

Update the dll through the **Project Management** environment. Go to Project Management and select the Catalog database as shown below.



- Go to **Tools->Update Custom Symbol Configuration**



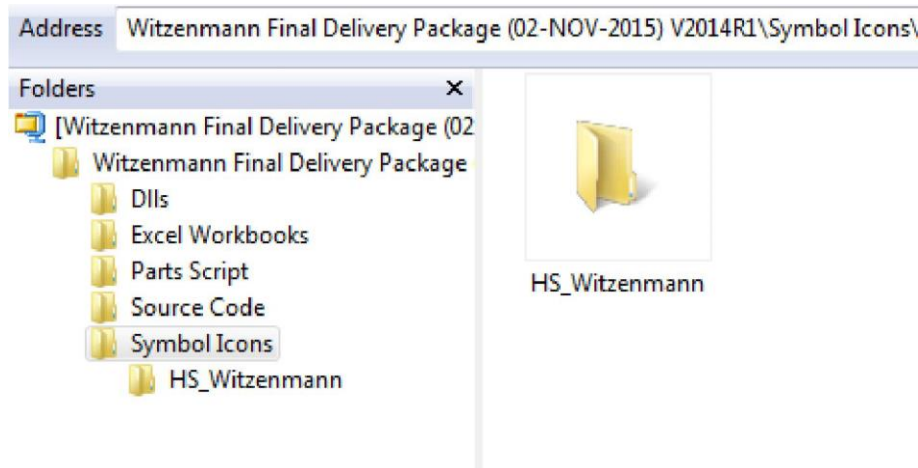
- It gives the following message which indicates that all the newly placed dll's are updated successfully.



- Click **OK**.

Step 2: Copy the Symbol Icons

- Copy the "HS_Witzenmann" folder from "Symbol Icons" folder and paste into "<InstalledDirectory>\Smart3D\3DRefData\SharedContent\Data\HangersAndSupports\PartImages"



Step 3: Bulkload Excel Workbooks for Catalog

- **Bulk Load Using "Add, modify, or delete records in existing catalog"**
 - Add the following excel files from "Excel Workbooks\Add, Modify, Delete" under "Excel codelist files" location in the bulkload tool.
AMD_HS_S3DParts_Codelist.xls
AMD_HS_System_Codelist.xls
 - Select "Add, modify, or delete records in existing catalog" bulkload mode

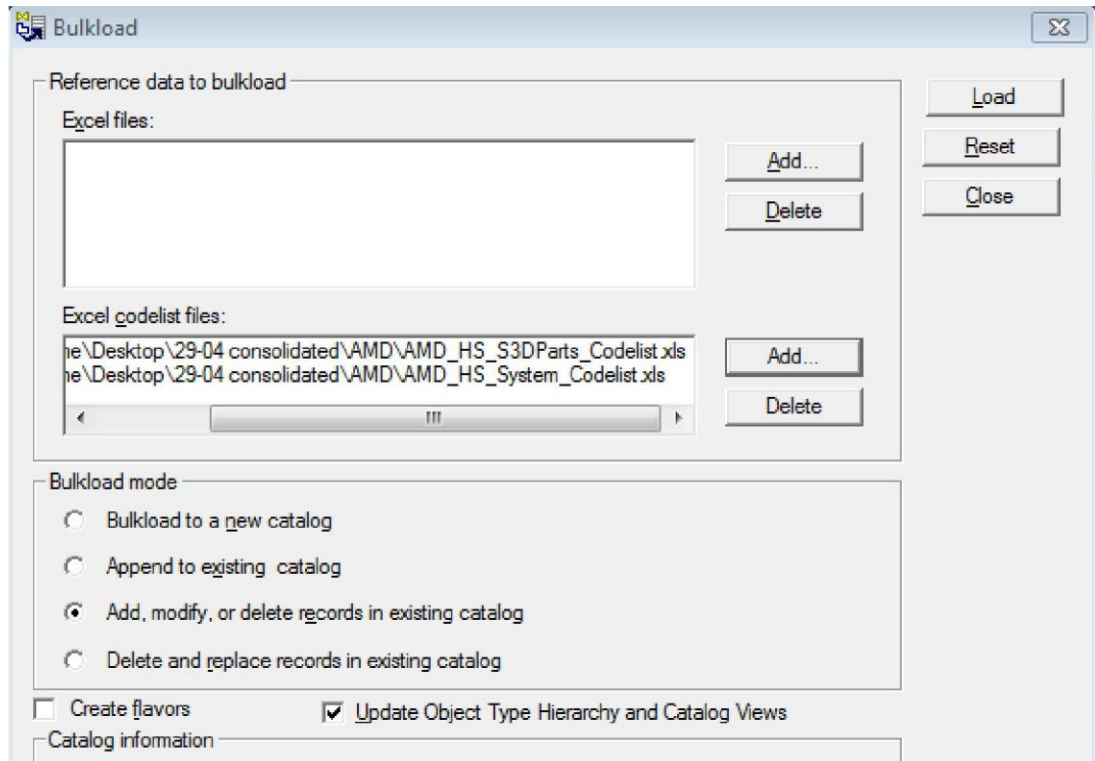


Image 2: Illustration of bulk loading operation (Add, modify, or delete records in existing catalog).

- **BulkLoad Using “Append to existing catalog”**

- Add the following excel files from “Excel Workbooks\Append” under “**Excel files**” location in the bulkload tool.
 - StructCrossSections-EURO-OTUA-2002.xls
 - StructCrossSections-Witzenmann.xls
 - HS_S3DParts_Witzenmann.xls
- Add the following excel files from “Excel Workbooks\Append” under “**Excel Codelist files**” location in the bulkload tool.
 - HS_S3DParts_Witzenmann_Codelist.xls
- Select “**Append to existing catalog**” bulkload mode

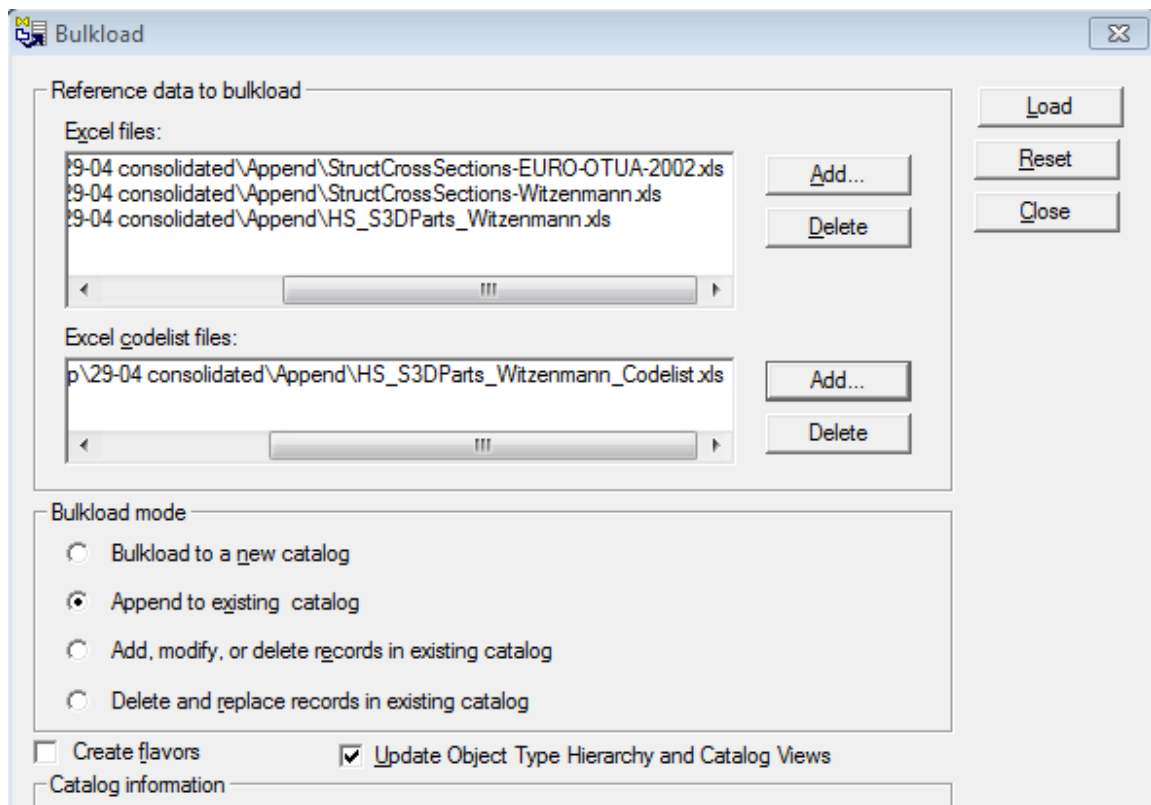


Image 2: Illustration of bulk loading Operation (Append to existing catalog).

DII Version

Witzenmann.DII

1.0.0.7